

Registro dei Tumori Infantili del Piemonte 1970-2005 – Bambini 0-14 anni. Sopravvivenza cumulativa (percentuale) per periodo di diagnosi e tipo istologico. Il periodo 1970-75 è limitato alla Provincia di Torino.

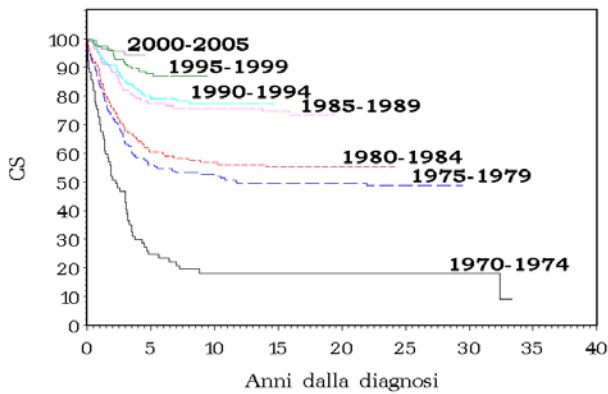
ICCC	TIPO ISTOLOGICO	PERIODO DI DIAGNOSI																																
		1970-1974							1975-1979							1980-1984					1985-1989				1990-1994				1995-1999			2000-2005		
		N	5	10	15	20	25	30	N	5	10	15	20	25	N	5	10	15	20	N	5	10	15	N	3	5	10	N	3	5	N	3	5	
Ia	Leucemia linfoblastica acuta	77	24.7	18.2	18.2	18.2	18.2	18.2	152	55.9	52.0	49.3	49.3	48.7	134	60.4	56.7	55.2	55.2	111	77.5	75.7	74.8	120	85.0	79.2	77.5	124	91.1	87.8	146	94.3	94.3	
Ib	Leucemia acuta non linfatica	12	0.0 <sup>a</sup>	0.0 <sup>a</sup>	0.0 <sup>a</sup>	0.0 <sup>a</sup>	0.0 <sup>a</sup>	0.0 <sup>a</sup>	33	18.2	18.2	15.2	15.2	15.2	29	27.6	24.1	24.1	24.1	25	44.0	44.0	36.0	21	38.1	38.1	33.3	29	69.0	69.0	20	95.0	79.2	
IIa	Morbo di Hodgkin	18	72.2	66.7	66.7	66.7	55.6	50.0	32	90.6	87.5	87.5	87.5	84.4	22	90.9	90.9	90.9	90.9	18	83.3	83.3	77.8	14	92.9	92.9	85.7	27	100.0	100.0	34	100.0	100.0	
IIb	Linfoma Non-Hodgkin	11	30.0	30.0	30.0	30.0	30.0	30.0	35	42.9	40.0	40.0	37.1	37.1	29	51.7	51.7	51.7	48.3	20	70.0	70.0	70.0	20	65.0	60.0	60.0	13	76.9	76.9	14	67.5	67.5	
III	Tumori cerebrali	62	32.8	31.1	27.9	26.2	24.6	23.0	119	42.0	37.8	35.3	33.6	32.8	119	57.1	52.9	50.4	49.6	110	68.2	62.7	60.0	102	83.3	80.3	78.3	117	76.1	72.6	153	80.1	80.1	
IIIa	Ependymoma	4	33.3	33.3	33.3	33.3	33.3	33.3	6	50.0	16.7	16.7	16.7	- <sup>b</sup>	16	43.8	43.8	31.3	31.3	8	50.0	50.0	50.0	16	81.3	81.3	67.7	18	72.2	61.1	22	81.0	81.0	
IIIb	Astrocitoma	22	40.9	36.4	31.8	31.8	31.8	31.8	41	58.5	56.1	53.7	53.7	51.2	32	78.1	71.9	71.9	71.9	47	74.5	68.1	61.6	43	90.7	88.4	88.4	49	81.6	79.4	66	85.0	85.0	
IIIc	Tumori neuroepiteliali primitivi	11	0.0 <sup>a</sup>	0.0 <sup>a</sup>	0.0 <sup>a</sup>	0.0 <sup>a</sup>	0.0 <sup>a</sup>	0.0 <sup>a</sup>	27	22.2	14.8	11.1	11.1	11.1	24	45.8	37.5	33.3	29.2	18	77.8	66.7	66.7	18	66.7	55.6	55.6	19	57.9	52.6	21	75.2	75.2	
IIId,e,f	Altri tumori cerebrali	25	40.0	40.0	36.0	32.0	28.0	24.0	45	37.8	37.8	35.6	31.1	31.1	47	53.2	51.1	51.1	51.1	37	59.5	56.8	56.8	25	84.0	84.0	84.0	31	80.6	80.6	44	74.5	74.5	
IV	Tumori sistema nervoso simpatico	18	11.1	11.1	11.1	11.1	11.1	11.1	40	30.0	30.0	30.0	30.0	30.0	41	41.2	38.6	38.6	38.6	34	64.7	55.9	55.9	38	62.5	51.2	48.4	32	75.0	68.3	56	76.5	66.9	
V	Retinoblastoma	7	57.1	57.1	57.1	42.9	42.9	42.9	12	83.3	83.3	83.3	83.3	83.3	10	60.0	60.0	60.0	60.0	5	100	100	100	15	93.3	93.3	93.3	16	93.8	87.5	12	91.7	91.7	
VIa	Tumore di Wilms	13	38.5	38.5	38.5	38.5	38.5	38.5	31	64.5	64.5	64.5	64.5	64.5	25	80.0	80.0	80.0	80.0	15	86.7	86.7	86.7	18	66.7	66.7	66.7	23	91.3	91.3	29	92.0	92.0	
VIIIa	Osteosarcoma	12	16.7	16.7	16.7	16.7	16.7	16.7	15	20.0	20.0	20.0	20.0	20.0	17	58.8	58.8	47.1	47.1	26	65.4	61.5	57.7	13	61.5	61.5	53.8	3	66.7	66.7	18	51.1	51.1	
VIIIc	Sarcoma di Ewing	3	0.0 <sup>a</sup>	0.0 <sup>a</sup>	0.0 <sup>a</sup>	0.0 <sup>a</sup>	0.0 <sup>a</sup>	0.0 <sup>a</sup>	7	14.3	14.3	14.3	14.3	14.3	14	50.0	35.7	35.7	35.7	12	50.0	50.0	50.0	10	90.0	90.0	80.0	8	75.0	75.0	12	73.3	73.3	
IXa	Rabdomiosarcoma	4	25.0	25.0	25.0	25.0	25.0	- <sup>b</sup>	18	66.7	50.0	50.0	50.0	50.0	18	72.2	66.7	66.7	66.7	18	66.7	61.1	61.1	15	80.0	66.7	66.7	13	69.2	61.5	19	82.9	82.9	
IXb,c,d,e	Fibrosarcoma e altri sarcomi	14	35.7	35.7	35.7	35.7	35.7	35.7	14	50.0	50.0	50.0	50.0	50.0	8	62.5	62.5	50.0	50.0	14	50.0	50.0	50.0	15	66.7	66.7	60.0	14	78.6	64.3	20	68.2	68.2	
	Altri tumori	55	30.9	29.1	27.3	23.6	23.6	23.6	59	37.3	35.6	35.6	35.6	35.6	41	36.6	36.6	36.6	36.6	56	62.2	60.4	60.4	55	72.2	72.2	68.5	51	90.2	90.2	78	82.8	82.8	
	Tutti i tumori	306	29.9	27.3	26.3	25.0	24.0	23.4	567	48.0	45.0	43.6	43.0	42.5	507	56.2	53.2	51.6	51.2	464	68.5	65.5	63.7	456	76.7	72.9	70.2	470	83.6	80.6	611	84.3	82.4	

<sup>a</sup> Tutti i casi con tempi di sopravvivenza inferiori

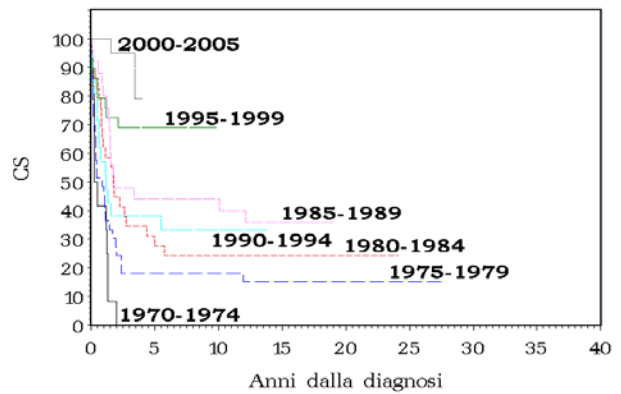
<sup>b</sup> Tutti i casi con osservazione troncata

Registro dei Tumori Infantili del Piemonte 1970-2005 – Bambini 0-14 anni. Sopravvivenza cumulativa (CS) per periodo di diagnosi e tipo istologico.

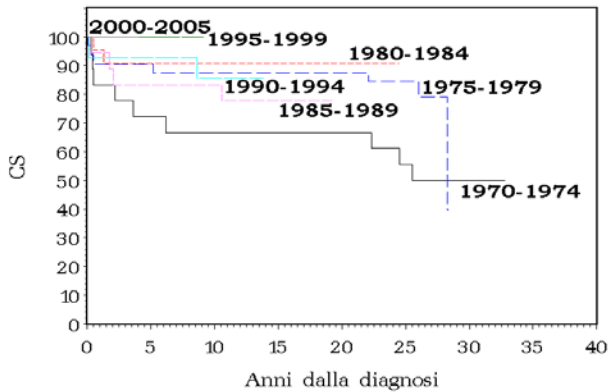
**Leucemia linfatica acuta**



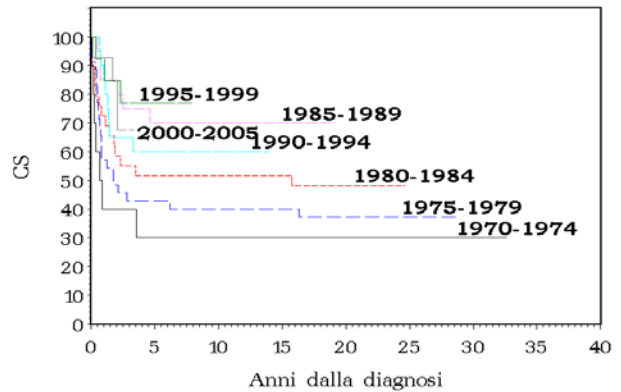
**Leucemia acuta non linfatica**



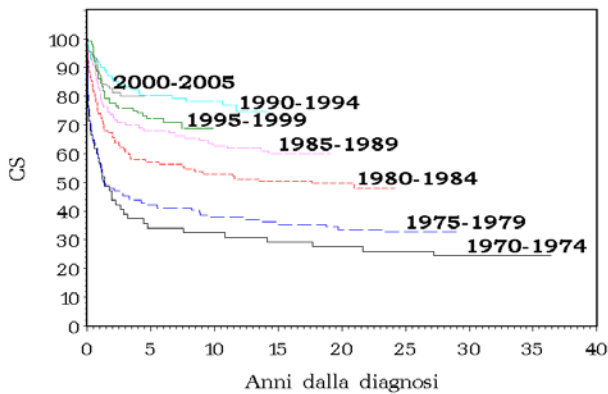
**Linfoma di Hodgkin**



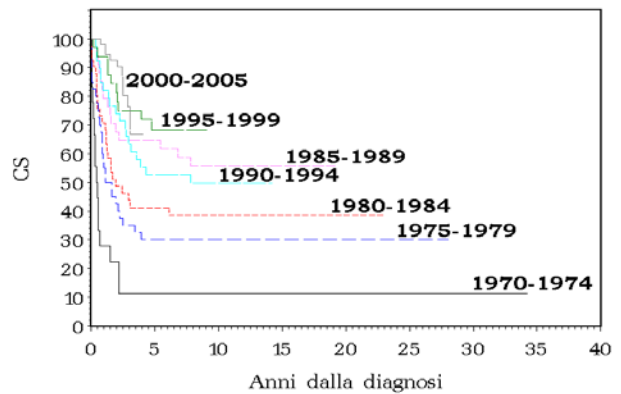
**Linfoma non-Hodgkin**



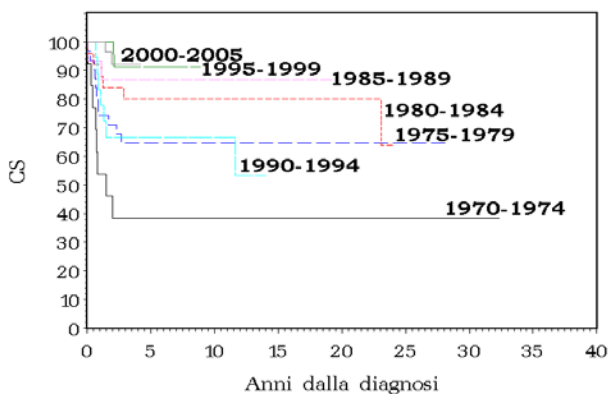
**Tumori cerebrali**



**Tumori del sistema nervoso simpatico**



**Tumore di Wilms**



**Tutti i tumori**

