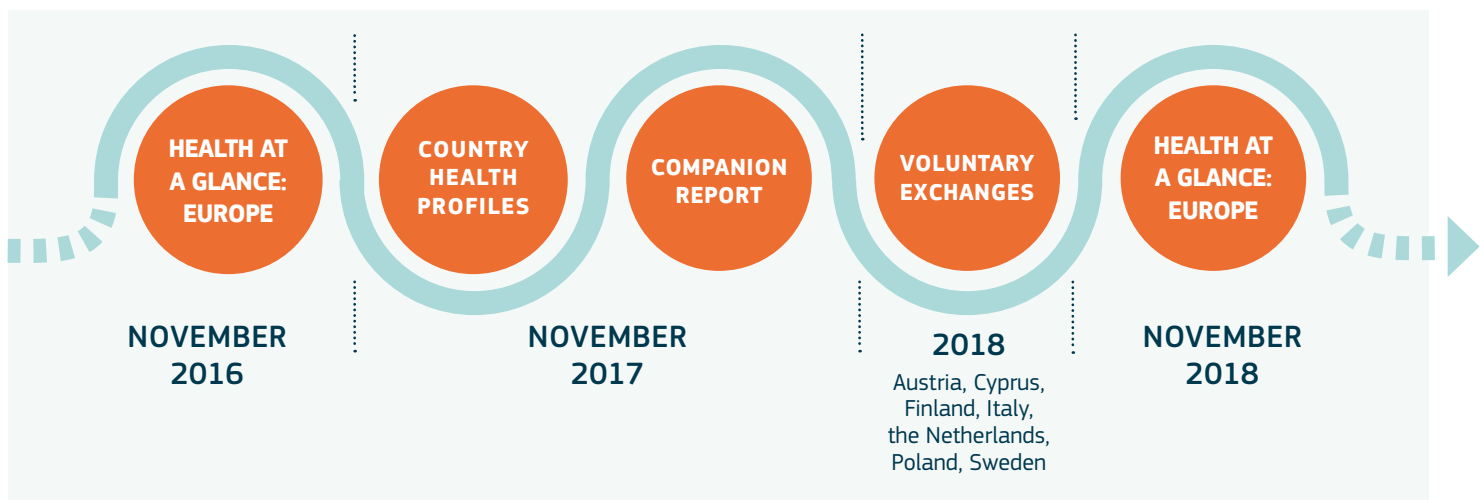




STATE OF HEALTH IN THE EU

Pooling expertise, strengthening knowledge

Deliverables of the **knowledge cycle**, in support of EU Member States



Making the case for smarter investing in health:

highlights of “Health at a Glance: Europe 2018”



Health spending accounts for **9.6% of GDP**



Up to one-fifth of health spending is inefficient and could be used for other care needs



1 in 6 people has a mental health issue

Direct and indirect costs adding up to more than **4% of the GDP** (over EUR 600 billion)



Low income households have **5 times higher unmet** care needs than high income

Unnecessary admissions consume over **37 million hospital bed days** each year

PREVENTION REMAINS A PRIORITY

MORE THAN 790 000 DEATHS PER YEAR DUE TO BEHAVIOURAL RISK FACTORS



20% ADULT EU CITIZENS ARE SMOKERS



38% ADOLESCENTS REPORTED BINGE-DRINKING



1 IN 6 ADULT EU CITIZENS ARE OBESE